



Strategic Plan Initiative

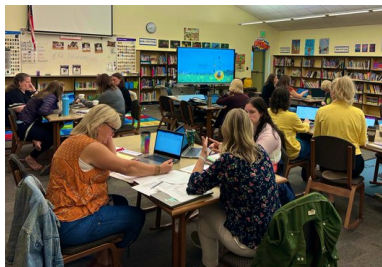
EFFECTIVE INSTRUCTION — B.1.a: Establish clear and vertically aligned instructional models/frameworks that embed culturally responsive instructional practices.



SUMMARY — By increasing staff capacity to meet the needs of each learner, this initiative links to the Effective Instruction theme of the strategic plan, which supports the six priority student outcomes.

COMPLETED:

- ✓ Train administrators on instructional vision
- ✓ Build instructional vision into school improvement plans
- ✓ Develop instructional look-fors for all subject areas



RESOURCES:

- [Instructional Vision link](#)
- [Strategic plan link](#)

“Students are at the heart of our instructional vision; they are empowered to have ownership over their learning and are given the tools, voice, choice and agency to be successful and reflective learners.” -Building Administrator

STUDENT IMPACT:

- Students do the thinking, are empowered and take ownership of their learning when the vision is actualized.
- Students learn, grow and communicate together toward a common instructional goal in each classroom.
- Students own their learning. They push each other towards individualized learning goals.

STAFF IMPACT:

- The vision helps staff focus on distinguished level instructional practices aligned with the TPEP evaluation system.
- Teachers are the guides, they help lift students to their potential.
- The vision helps shift our focus to a more student-centered approach. This paves for inclusionary practices, improved Tier 1 instruction and instructional shifts.

QUESTIONS? PLEASE CONTACT:

Kalle Spear, 425-385-4064, KSpear@everettsd.org



Strategic Plan Initiative

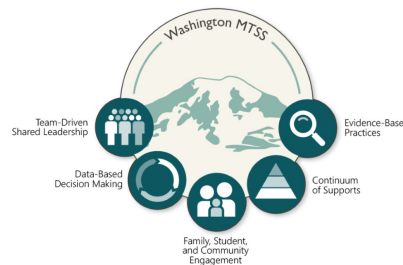
EFFECTIVE INSTRUCTION —B.1.b: Redesign and fully implement a comprehensive multi-disciplinary, system-wide Multi-Tiered System of Support.



SUMMARY — By increasing staff capacity to meet the needs of each learner, this initiative links to the Effective Instruction theme of the strategic plan, which supports the six priority student outcomes.

COMPLETED:

- ✓ Establish cross-department training and collaboration
- ✓ Establish District Advisory Team
- ✓ Collect base-line stakeholder data



RESOURCES:

- MTSS overview link
- Panorama survey information
- Strategic Plan link

“Multi-Tiered System of Supports (MTSS) helps to ensure students benefit from nurturing environments and equitable access to instruction and supports that are differentiated to meet their unique needs.” -OSPI

STUDENT IMPACT:

- Supports the whole child: academic, social-emotional, behavioral and attendance.
- Increases equitable and differentiated access to learning and intervention.
- Provides regular progress monitoring to ensure student growth.

STAFF IMPACT:

- School-wide expectations are systematically taught and retaught
- Data is used to make decisions about individual students and school-wide needs
- The district's Five Core Principals of PBIS and the Benchmark of Implementation provides schools with a clear pathway toward success

QUESTIONS? PLEASE CONTACT:

Mimi Brown, 425-385-4061, MBrown@everettsd.org



Strategic Plan Initiative

EFFECTIVE INSTRUCTION — B.2.c: Establish consistent grading and assessment practices across all schools and grade levels to reflect student learning that indicates mastery.



SUMMARY — By establishing personalized learning opportunities for all students, this initiative links to the Effective Instruction theme of the strategic plan, which supports the six priority student outcomes.

COMPLETED:

- ✓ Incorporate elements of grading and assessment practices in all strategic themes
- ✓ Engage stakeholders in policy review
- ✓ Communicate information about grading and assessment internally

IMAGE
PLACEHOLDER

RESOURCES:

- Bulleted item goes here
- Bulleted item goes here
- Bulleted item goes here
- Strategic plan link

“Lorem ipsum dolor sit amet, consectetur adipiscing elit, sed do eiusmod tempor incididunt ut labore et dolore magna aliqua ut enim ad minim quis.”

STUDENT IMPACT:

- Bulleted item goes here
- Bulleted item goes here
- Bulleted item goes here
- Bulleted item goes here

TEACHER IMPACT:

- Bulleted item goes here
- Bulleted item goes here
- Bulleted item goes here
- Bulleted item goes here

QUESTIONS? PLEASE CONTACT:

Catherine Matthews, 425-385-4058, CMatthews@everettsd.org
Cathy Woods, 425-385-4021, CWoods2@everettsd.org